

LEAHY SCHOOL PROJECT UPDATE

June 3, 2024

Progress through: May 31, 2024

Weather: There was minimal impact on progress throughout the month.

Structural Steel

- Detailing work continued through the end of the month. Aligning and securing the masonry relieving angles will be ongoing through mid-June.

Under-slab

- The underground plumbing and electrical are mostly complete.

Earthwork

- 30% of the subbase for the first-floor slab has been prepped and scheduled for placement the first week of June.

Masonry

- Stair shaft #3 and the elevator shaft were completed.
- Stair shaft #1 is 90% complete. And expected to be complete by mid-June.
- The CMU walls for the gymnasium office and storage closets were started and are 50% complete.

Utilities

- The easement paperwork for the onsite transformer is being processed and in the hands of National Grid and the City and pending approval.

Flat work concrete

- The structural slabs on decks, Levels 2 through 5, are complete, minus the secondary slab for the gym floor and equipment areas on the roof.
- 30% of ground level slab area has been prepped with the vapor barrier in place.

Plumbing and HVAC

- Levels 2 through 4, layout and installation of hangers continued for both plumbing and HVAC.
- Level 2, HVAC piping and ductwork was started.
- Level 4, installation of the rain leader piping for the roof drains was started.

Cold-formed Metal Framing

- Exterior - Framing of the walls began starting on the north face and first level of courtyard.
- The interior wall layout was started, and framing began starting electrical rooms partitions.

Fireproofing

- Spray application began; Level 2, and Level 3, are 90% and 25% completed, respectively.

Fire Protection

- The contractor mobilized and started installing mains and branch line on Level 2.

Misc. Metals

- The contractor mobilized and is expected to start installing the stair case for Stair #2 during the first week of June.

Electrical

- Started pulling above ceiling on Level 2, installed floor box raceways Level 1, layout of electrical room equipment, and started coring holes for electrical sleeves between floors.

Safety and Security

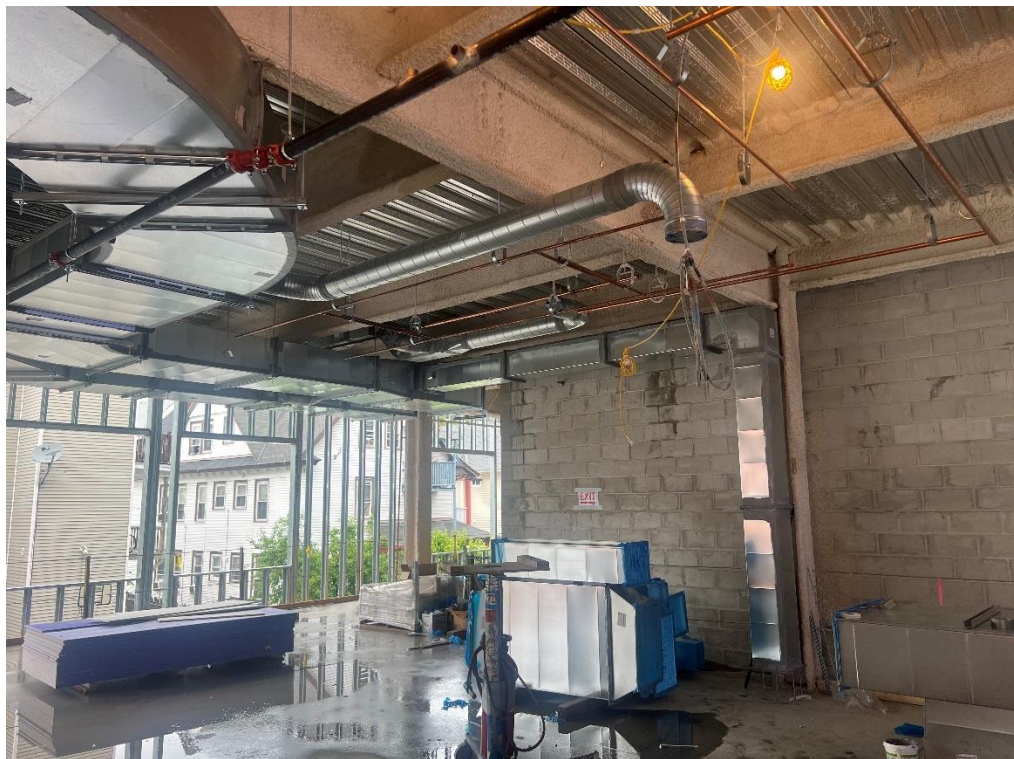
- There was overnight incident of theft May 20 - the metal framers tool shack on the second floor was broken into and tools and supplies were stolen. A police report was filed.

Traffic interruptions are expected to continue at Erving Ave. and Bruce St. for deliveries during the daytime hours.

PHOTOS:



Courtyard view



Ductwork Installation



Level 2 Fireproofing spray application



Gym office and storage room walls



Roof, infill framing between parapet steel



Kindergarten, under slab vapor barrier